

Theme 1 Children, Young People and Families

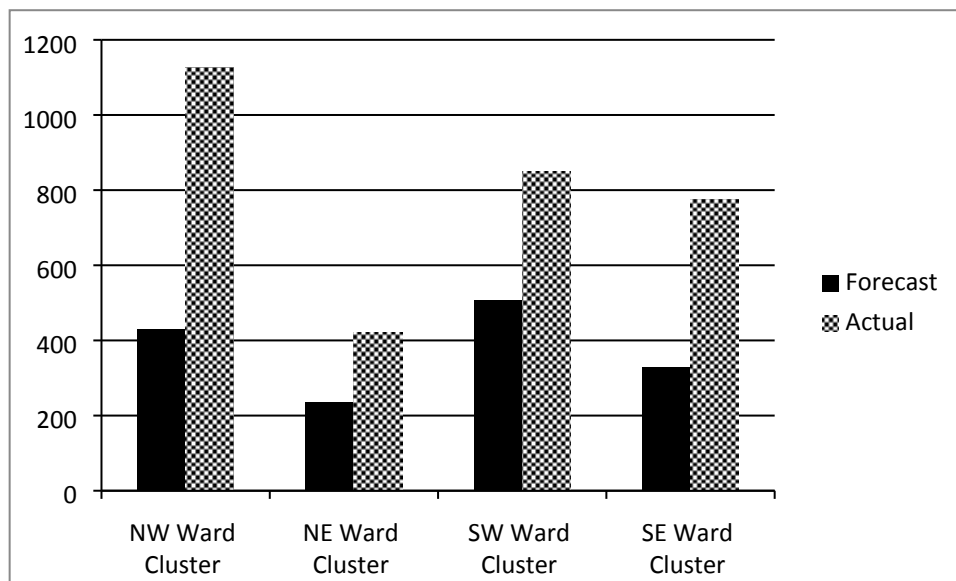
MSG Programme Period 4 (Jul-Sep 2016) Performance Report

Theme 1 – Children, Young People & Families: This theme focuses on seeking the following key outcomes:

- Improved levels of participation, educational attainment and progression for children and young people.
- Children and young people are protected from harm and families are supported to provide a safe environment.
- Harmful relationships among peer/gender groups are reduced.
- Improved physical (such as reduced levels of obesity) and emotional health and wellbeing in children and young people.
- Reduced levels of substance misuse and sexual abuse, violent crime (including domestic violence) and anti-social behaviour.

Geographical Breakdown

The table below shows the number of beneficiaries supported during the period July to September 2016 by Ward Cluster:



NW Ward Cluster	NE Ward Cluster	SW Ward Cluster	SE Ward Cluster
<ul style="list-style-type: none"> • Bethnal Green • Spitalfields & Banglatown • St Peter's • Weavers 	<ul style="list-style-type: none"> • Bow East • Bow West • Bromley North • Bromley South • Mile End 	<ul style="list-style-type: none"> • Shadwell • St Dunstons • St Katherine's & Wapping • Stepney Green • Whitechapel 	<ul style="list-style-type: none"> • Blackwall & Cubitt Town • Canary Wharf • Island Gardens • Lansbury • Limehouse • Poplar

Raising Attainment Project Portfolio – Children’s Services

No. of live projects – Jul-Sep 16	No. of projects classed as GREEN	No. of projects classed as AMBER	No. of projects classed as RED
9	9	0	0

There are 9 projects in this category; all classed as ‘Green’ and meeting the agreed expenditure targets, service outputs and outcomes as indicated in monitoring reports and case studies received. All projects are working closely with schools and parents to provide reciprocal feedback on their young students. Officers will continue to work with organisations to ensure quality driven provision.

Vulnerable & Excluded Families Project Portfolio – Children’s Services

No. of live projects – Jul-Sep 16	No. of projects classed as GREEN	No. of projects classed as AMBER	No. of projects classed as RED
6	6	0	0

There 6 projects in this category; all of which are classed as ‘Green’ and are on course to meet the agreed expenditure targets, service outputs and outcomes as indicated in monitoring reports received.

Community Languages Project Portfolio - CLC

No. of live projects Jul-Sep 2016	No. of projects classed as GREEN	No. of projects classed as AMBER	No. of projects classed as RED
10	10	0	0

There are 10 projects in this category; all of which are classed as ‘Green’ and are on course to meet the agreed expenditure targets, service outputs and outcomes as indicated in monitoring reports received.

Youth Services Project Portfolio - CLC

No. of live projects – Jul-Sep 16	No. of projects classed as GREEN	No. of projects classed as AMBER	No. of projects classed as RED
16	16	0	0

There are 16 projects in this category; all of which are classed as ‘Green’ and are on course to meet the agreed expenditure targets, service outputs and outcomes as indicated in monitoring reports received. City Gateway have ended the Back on Track: Engagement and Progression project as at the end of June 2016.

Sports Project Portfolio - CLC

No. of live projects – Jul-Sep 16	No. of projects classed as GREEN	No. of projects classed as AMBER	No. of projects classed as RED
7	6	0	1

There are 7 active projects in this category; 6 of which are classed as 'Green' and are on course to meet the agreed expenditure targets, service outputs and outcomes as indicated in monitoring reports received.

1 project classed as Red:

Children Education Group – Berner Football Academy

Under performance on outputs in this period. Lack of funding has made an impact as no Main Stream Grant has been paid from the start of the project due to the Premises condition not being met.

Culture Project Portfolio - CLC

No. of live projects – Jul-Sep 16	No. of projects classed as GREEN	No. of projects classed as AMBER	No. of projects classed as RED
9	7	1	1

There are 9 active projects in this category; 7 classed as 'Green' and are on course to meet the agreed expenditure targets, service outputs and outcomes as indicated in monitoring reports received.

Mile End Community Project – Female Leadership and Empowerment Project has withdrawn from the programme.

1 project classed as Red:

Monakka Monowar Welfare Foundation (MMWF) - Life-changing Musical and Keep-fit Project

Organisation withdrew from the project in late October 2016, then suggested the possibility of a revision to outputs and the resumption of project activities in December 2016 if suitable premises were obtained. It has not responded to LBTH deadline for business plan for proposed revised outputs and has been provided a deadline of 21st December 2016 to submit a detailed business plan and a request for variation.

1 project classed as Amber:

The Shadwell Community Project - The People GAP

Commissioners have approved a significant variation request for project, relating to its match funding budget. However, provider will be

Appendix 4.1

submitting another significant variation request relating to number of beneficiaries. Recommend that Commissioners approve SCP's significant variation request for reduced outputs for Period 4 (July-September 2016) and Period 8 (July-September 2017), enabling the project to move off AMBER to GREEN. The move off Amber would be conditional on SCP having implemented the following actions prior to Grant Scrutiny Sub-Committee meeting on 11th January 2017 and Commissioners Decision Making Meeting on 17th January 2017:

- submission of a satisfactory finance monitoring returns for Periods 1 to 3 to LBTH
- submission of outstanding monitoring information for Period 4 to LBTH
- having a clear target date for an action plan to improve organisational management and project management. This plan should include appropriate SMART targets
- introducing better communication systems with LBTH. SCP has demonstrated delays in responding to e-mails and telephone calls from LBTH.